

CANNABIS OIL EXTRACTION FACILITY DESIGN

Licensed Washington State Professional Engineer

FACILITY DESIGN SERVICES

- Butane and CO₂ extraction systems, rotary evaporators, vacuum ovens
- Exhaust systems and make up air
- Flammable materials exhaust systems
- Stamped facility design plans
- Stamped building analysis reports

SYSTEMS DESIGN SERVICES

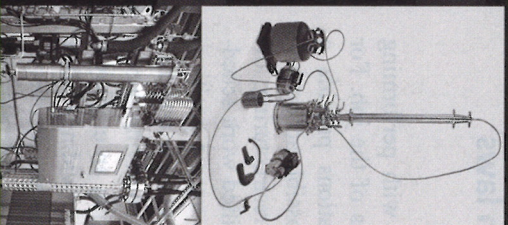
- Stamped extraction system reports
- Structural, pressure, and process safety analysis
- Code compliance review

We can work with you on any system or facility design.

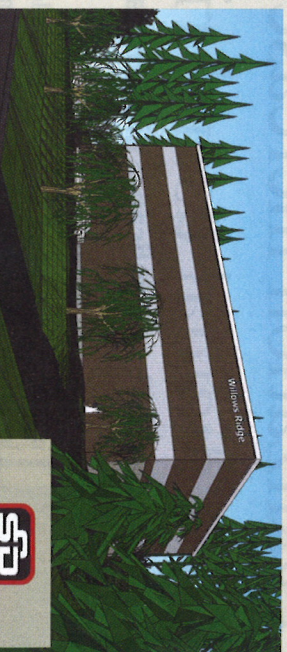


JOHNSTON
ENGINEERING

(509) 290-1034
info@johnstonpe.com
www.JohnstonPE.com/extraction



FOR LEASE



Willows Ridge Building
12611 Willows Rd NE, Kirkland, WA



NEW 502-COMPLIANT CONSTRUCTION

Heavy Power Available
Large Water Supply with Recapture System
Secure Building Access w/ Card Key Control
Ready for Tenant Build Out
Building Designed to Control Odor
Available January 2018

CONTACT Thomas Allen

425.837.9720 TAllen@SeaConllc.com

This information supplied herein is from sources we deem reliable. It is provided without any representation, warranty, guarantee, express or implied as to its accuracy or prospective. Buyer or tenant should conduct an independent investigation of all facts and circumstances and consult with their attorney, accountant, or other professional advisor.

dk | LAW

a recognized leader in Washington marijuana business
law with a track record of successfully representing
clients as they start-up, get established
and grow.

Legal Counsel for the Cannabis Industry



David Kerr

600 N 36th Street, Suite 202

Seattle, WA 98103

☎ 206.234.5819

✉ david@dkerrlaw.com